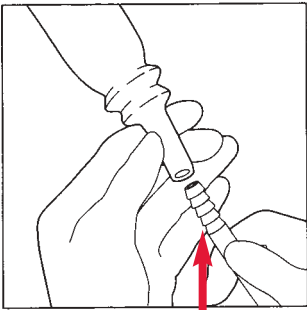


# Hollister

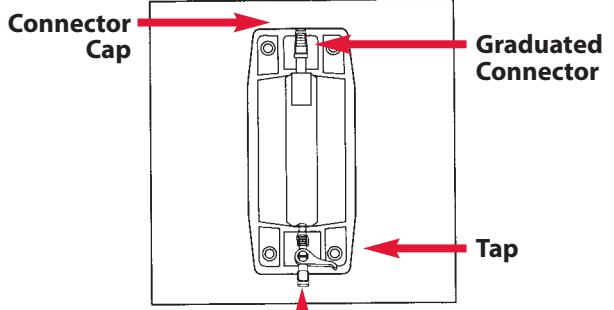
Instructions for use

## Leg Bag Systems

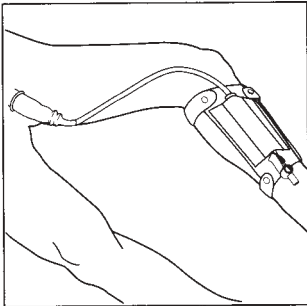




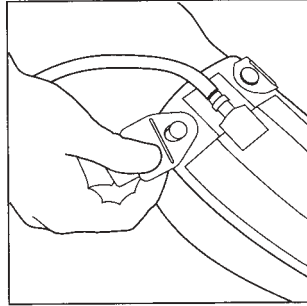
**1.** Graduated Tubing Connector



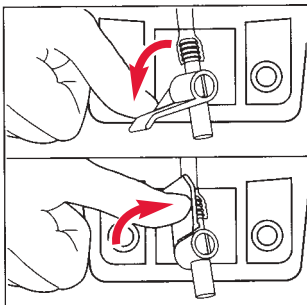
**2.** Tap Plug



**3.**



**4.**



**Open**

**Closed**

**5.**

# Leg Bag systems

---

## Applying the Extension Tubing

**1.** Attach the sterile extension tubing to the bottom of the sheath or catheter by inserting the graduated tubing connector. When used with the leg bag, determine the appropriate length for the extension tubing. The tubing should span the distance between the sheath/catheter comfortably without tugging or kinking. Remove excess tubing with clean or sterile scissors and discard.

## Applying the Leg Bag

**2.** Before attaching the leg bag, ensure the drain tap at the bottom of the Leg Bag is closed. Remove the cap from the graduated connector at the top of the Leg Bag and insert the free end of the extension tubing into the connector.

**3.** Place the leg bag on either the inner or outer portion of the calf or thigh. **Note:** the leg bag may also be worn horizontally if there is the desire to wear shorts or skirt.

## Applying the Fabric Leg Bag Straps

**4.** Attach a leg bag strap to one of the buttons at the top of the leg bag. Bring the strap around the leg and attach it to the corresponding button. Repeat this procedure with the other strap. Adjust the straps so they are comfortable and secure.

## Draining the Leg Bag

**5.** To drain the leg bag, first ensure the plug has been removed from the bottom of the tap. To open the tap, flip the blue valve away from the leg bag front. Empty the contents into a toilet or other appropriate receptacle. Close the tap to reseal the leg bag.

## Connecting the Leg Bag to Another Collector

The packet containing the sterile extension tubing also contains a separate larger bore piece of tubing. Attach this tubing piece to the bottom of the blue tap (ensure the plug is removed first). Insert the connector of the other collector into this tubing piece and open the blue tap.

**Note:** Do not try to attach the connector from the other collector without this additional piece as unintentional separation may occur.

## Care and Maintenance of the Leg Bag System

The leg bag, straps and tubing are re-usable for up to 4-12 weeks.

If using a sheath, follow the care and maintenance instructions on the applicable instruction sheet.

If using a catheter, follow the corresponding care and maintenance instruction sheet for a closed system.



**Hollister Australia**  
6/345 Ingles Street  
Port Melbourne, Victoria 3207

**Hollister New Zealand**  
58 Richard Pearse Drive  
Airport Oaks, Auckland

[www.ostomyworld.com.au](http://www.ostomyworld.com.au)



© 2004 Hollister Incorporated. All rights reserved.  
Hollister and logo are registered trademarks  
of Hollister Incorporated.