

Premier

One Piece Solutions

**Drainable and
Urostomy Pouches**



Premier, Drainable and Urostomy Pouches

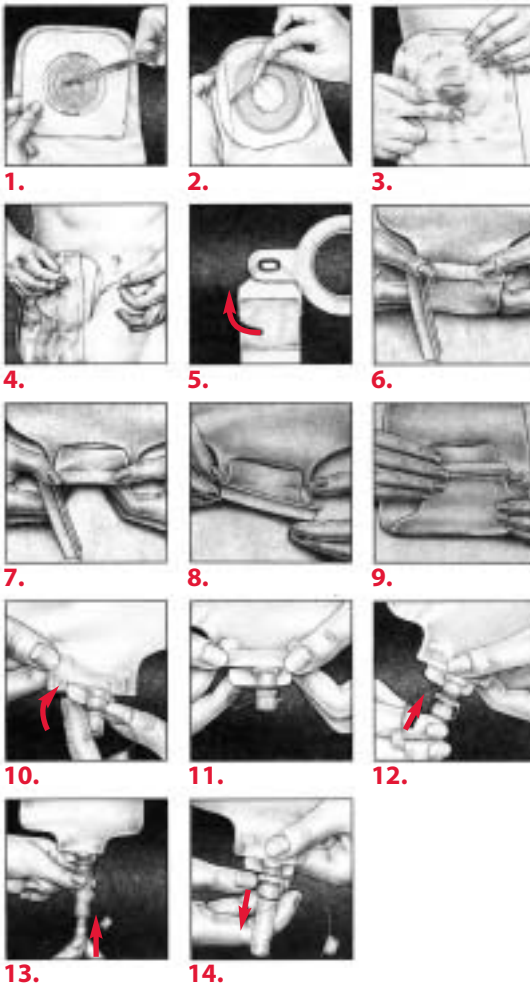
Correct pouch size is essential. Re-measure the stoma with a Hollister Stoma Measuring Card before ordering pouches.

When using a pre-sized pouch, choose the opening that fits more closely around the stoma without actually touching it. Any exposed skin should be protected by using a layer of Hollister Adapt Paste (Stock No.79300).

The skin should be clean and dry (free from any oily or soapy residues) before the pouch is applied.

For drainable pouches: Be sure you have attached a clamp or closure to the bottom of the pouch before putting the pouch on.

For urostomy pouches: Before putting on the pouch, make sure the drain valve is closed and the cap attached. The tear drop "💧" should **not** be visible when the drain valve is closed.



Sizing a Cut-to-Fit Pouch

1. Trace the stoma shape on the printed skin barrier cutting guide. Use scissors to cut an opening in the barrier to match the correct size and shape of the stoma.

Separate the front and back pouch panels to avoid cutting the pouch when cutting the stoma opening in the skin barrier.

Applying a Cut-to-Fit or Pre-Sized Pouch

2. Remove the protective covering from the skin barrier. The skin barrier has an adhesive square border, so only remove the large section of backing paper from the middle. Leave the two narrow strips on the sides.

3. Centre the skin barrier around the stoma. Make sure the pouch is hanging in the right direction – normally straight down. Press the skin barrier down around the stoma and against the skin. If the skin barrier has an adhesive border, first apply the part below the stoma. Carefully smooth the adhesive down against the skin. Work from the base of the stoma outward and avoid wrinkles.

4. Remove the two narrow strips of backing paper. Finish pressing adhesive to skin; first one side, then the other then the top. Be careful to avoid wrinkles between the adhesive skin barrier and the skin.

Using an Ostomy Belt

Premier Convex Pouches have attached belt tabs to accommodate the use of a Hollister ostomy belt, if desired.

5. If the belt option is chosen, turn the plastic fasteners on the end of the belt so that the buttons slip through the slots in the belt tabs on each side of the pouch gasket. Then turn the belt so the fasteners lock securely in place. Use the plastic slide adjuster to adjust the length of the belt so it fits comfortably.

Using a Drainable Pouch Clamp

6. Lay the single bar of the clamp on the pouch.
7. Fold the pouch up once, over the single bar. Be sure there are no wrinkles in the pouch film near the fold.
8. Holding the pouch firmly around the bar, close the clamp by pressing the two bars together until they lock securely at the finger latch.

Using a Comfort Closure


Remove the release paper from the closure. Place the closure on the body side of the pouch about 7mm from the bottom. Tightly fold the pouch three or four times. Tightly fold the tail closure ends away from the body side of the pouch.

Emptying the Drainable Pouch

9. Lift the bottom of the pouch with one hand, release the finger latch with the other hand and remove the clamp. If using a comfort closure, unroll the pouch but leave the closure attached. Direct the open end of the pouch over the toilet or other receptacle. Wipe the end of the pouch with a tissue after it has been emptied, and re-apply the clamp or closure.

Emptying the Urostomy Pouch

10. With the pouch pointing downward, direct the drain valve into the toilet or other receptacle and remove the cap. Gently rotate the valve a half-turn, or until you achieve the desired flow rate.
11. To close the valve when the pouch is empty, return the valve to the original position and replace the cap.

Note: The tear drop “” should **not** be visible when the drain valve is closed.

Applying the Urostomy Drain Tube Adaptor

Before applying the adaptor, empty the pouch and close the drain valve.

12. Grasp the drain valve and push the adaptor onto the lower portion of the valve until it snaps into place.
13. Insert the connector of the night drainage collector into the end tubing of the adaptor. Rotate the drain valve to the full open position.

Removing the Urostomy Drain Tube Adaptor

Close the drain valve **before** disconnecting the adaptor.

14. Grasp the base of the drain valve with one hand. With the other hand, grasp and squeeze the connector portion of the adaptor and pull it off the valve and replace the cap.

Discarding the Drainable or Urostomy Pouch

If wearing a drainable or urostomy pouch, drain the pouch before removing it.

Wrap the used pouch in paper and discard in an appropriate receptacle. **Do not flush it down the toilet.**

Store pouches in a cool, dry place during hot weather.

Fresh pouches should also be kept from very cold temperatures.



© 2004 Hollister Incorporated. All rights reserved.
Hollister and logo, ComfortWear, ElastaFlex, FlexTend
and Premier are registered trademarks of Hollister Incorporated.



Hollister

Hollister New Zealand
58 Richard Pearse Drive
Airport Oaks, Auckland

www.ostomyworld.com.au