

# New Image

Two Piece Solutions

**Closed, Drainable  
and Urostomy Pouches**



# New Image Two-Piece Ostomy System

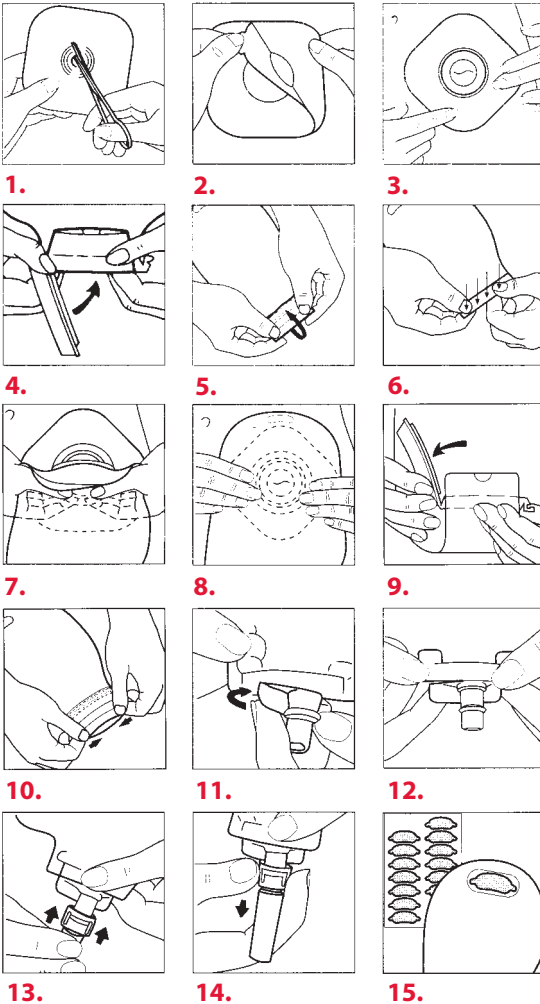
Correct skin barrier (flange) size is essential. Re-measure the stoma with a Hollister Stoma Measuring Card before ordering skin barriers.

When using a pre-sized skin barrier, choose the opening that fits more closely around the stoma without actually touching it. Any exposed skin should be protected by using a layer of Hollister Adapt Paste (Stock No.79300).

The skin should be clean and dry (free from any oily or soapy residues) before the skin barrier is applied.

**For drainable pouches:** Be sure you have attached a clamp or closure to the bottom of the pouch or closed the Lock 'n Roll closure before attaching the pouch to the skin barrier.

**For urostomy pouches:** Before attaching the pouch to the skin barrier, make sure the drain valve is closed and the cap attached. The tear drop "👉" should **not** be visible when the drain valve is closed.



## Sizing a Cut-to-Fit Skin Barrier

**1.** Trace the stoma shape on the printed skin barrier cutting guide. Use scissors to cut an opening in the barrier to match the correct size and shape of the stoma. This step is not necessary with the correct pre-cut skin barrier.

## Applying the Skin Barrier

When using a Flextend skin barrier, for maximum wear time, the use of Skin Gel Wipe is not recommended

**2.** Remove the protective covering from the skin barrier.

**3.** Centre the skin barrier around the stoma. Press the skin barrier down around the stoma and against the skin. Be careful to avoid wrinkles between the adhesive skin barrier and the skin.

## Using a Drainable Pouch with Clamp

**4.** Lay the single bar of the clamp on the pouch. Fold the pouch up once, over the single bar. Be sure there are no wrinkles in the pouch film near the fold. Holding the pouch firmly around the bar, close the clamp by pressing the two bars together until they lock securely at the finger latch.

## Using a Drainable Pouch with Lock 'n Roll Closure

5. Roll the pouch tail three times upward until the closure strips meet.
6. Press firmly along the entire closure strip until the pouch is sealed completely.

## Applying the Pouch to the Skin Barrier (closed, drainable and urostomy)

7. Place the lower edge of the pouch ring against the lower portion ("6 o'clock" position) of the skin barrier ring. Starting at "6 o'clock", press both rings together while moving upward toward "12 o'clock" and then back down to "6 o'clock". Audible clicks confirm you have aligned the rings correctly.
8. Press the two rings together until you do not hear additional clicks.

## Emptying a Drainable Pouch with Clamp

9. Lift the bottom of the pouch with one hand, release the finger latch with the other hand and remove the clamp. If using a comfort closure, unroll the pouch but leave the closure attached. Direct the open end of the pouch over the toilet or other receptacle. Wipe the end of the pouch with a tissue after it has been emptied, and re-apply the clamp or closure.

## Emptying a Drainable Pouch with Lock 'n Roll Closure

10. Unroll the pouch closure. The pouch can now be easily drained, and the pouch tail can be wiped clean with a tissue or toilet paper. Reclose the pouch per steps 5 and 6.

## Emptying the Urostomy Pouch

11. With the pouch pointing downward, direct the drain valve into the toilet or other receptacle and remove the cap. Gently rotate the valve a half-turn, or until you achieve the desired flow rate.

12. To close the valve when the pouch is empty, return the valve to the original position and replace the cap.

Note: The tear drop "💧" should **not** be visible when the drain valve is closed.

## Applying the Urostomy Drain Tube Adaptor

Before applying the adaptor, empty the pouch and close the drain valve.

13. Grasp the drain valve and push the adaptor onto the lower portion of the valve until it snaps into place. Insert the connector of the night drainage collector into the end tubing of the adaptor. Rotate the drain valve to the full open position.

## Removing the Urostomy Drain Tube Adaptor

Close the drain valve **before** disconnecting the adaptor.

14. Grasp the base of the drain valve with one hand. With the other hand, grasp and squeeze the connector portion of the adaptor and pull it off the valve and replace the cap.

## Discarding the Closed, Drainable or Urostomy Pouch

To remove the pouch, gently peel the pouch away from the ring, using the peel tab at the top of the pouch and working downward, while pressing lightly against the flange.

If wearing a closed pouch, remove it and empty the contents down the toilet. If wearing a drainable or urostomy pouch, drain the pouch before removing it. Wrap the used pouch in paper and discard in an appropriate receptacle. **Do not flush it down the toilet.**

The skin barrier (flange) may stay in place for 1 to 7 days.

## Filter Covers (for drainable pouches only)

15. Cover the filter on the outside of the pouch when swimming or bathing. Remove afterwards.

## Storage

Store pouches in a cool, dry place during hot weather.

Fresh pouches should also be kept from very cold temperatures.



**Hollister Australia**  
6/345 Ingles Street  
Port Melbourne, Victoria 3207

**Hollister New Zealand**  
58 Richard Pearse Drive  
Airport Oaks, Auckland

[www.ostomyworld.com.au](http://www.ostomyworld.com.au)



© 2004 Hollister Incorporated. All rights reserved.  
Hollister and logo, New Image and Lock'n Roll are registered  
trademarks of Hollister Incorporated.