

Adapt

Lubricating Deodorant

Better Products with you in mind



Instructions for Use of Adapt Lubricating Deodorant

Destroys odours, facilitates emptying and prevents pancaking. Not a perfume or masking agent.

1.



One Piece Pouches

1. Add approximately 5ml (1tsp) to the inside top section of the pouch, just below the filter prior to removing the release paper on the pouch.
2. If pouch is already attached to skin, add through tail of pouch (if using drainable pouch).

2.



Two Piece Pouches

3. Add approximately 5ml (1tsp) of Adapt Lubricating Deodorant into the pouch just below the filter prior to attaching to the flange.

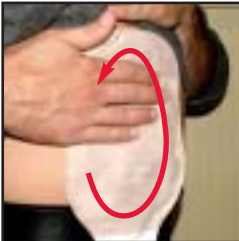
3.



Drainable Pouches

4. Rub the outside of the pouch ensuring the inside of the pouch is completely coated. It is important that all inside edges of the pouch are coated thoroughly for the lubricant to work effectively. Repeat steps 2 and 3 after each empty.

4.



Closed Pouches

5. Add the 5ml to the inside top section of the pouch below the filter. Rub to coat the top of the inside of the pouch as well as the area of the pouch that will be directly facing the stoma to ensure the pouch surface is well coated with lubricant. Repeat after each pouch change.

5.



NOTE:

Avoid contact with the adhesive of the skin barrier or flange.
For use in Ostomy Appliances only.

Adapt Lubricating Deodorant

Designed to deliver the dual benefits of lubrication and odour control

Lubrication

- Helps prevent 'pancaking' in closed pouches
- Cleaner and easier emptying of drainable pouches as the lubricant prevents content adhering to the pouch sides
- Lubricant is water based so will not interfere with pouch seals



Odour Control

- Works by neutralizing the odour
- Not a perfume or masking agent



Discarding the Closed or Drainable Pouch

If wearing a closed pouch, remove it and empty the contents down the toilet. If wearing a drainable pouch, drain the pouch before removing it. Wrap the used pouch in paper and discard in an appropriate receptacle. **Do not flush it down the toilet.**

Store pouches in a cool, dry place during hot weather. Fresh pouches should also be kept from very cold temperatures.



Hollister Australia
6/345 Ingles Street
Port Melbourne, Victoria 3207

Hollister New Zealand
58 Richard Pearse Drive
Airport Oaks, Auckland

www.ostomyworld.com.au



© 2004 Hollister Incorporated. All rights reserved.
Hollister and logo, and Adapt are registered trademarks
of Hollister Incorporated.