

New Image

Two-Piece Ostomy System

How to apply skin barrier and pouch

Collect supplies.

- Skin barrier, pouch, gauze or tissue, water.
- Other supplies which *may* be needed include: pouch clamp, scissors, measuring guide, stoma paste, or skin barrier ring, _____.

Prepare the skin barrier.

For a **cut-to-fit skin barrier**:

- Trace the pattern of the stoma onto the release film of the skin barrier. If you know your stoma size, identify the correct circle on the cutting guide.
- Cut the skin barrier so that it fits comfortably around your stoma.

Prepare the pouch.

- If using a drainable pouch, apply pouch clamp.
- If using a urostomy pouch, make sure the urostomy valve is in the closed position. The teardrop indicator should face your body. Apply valve cap.



Figure 1

Clean and dry skin thoroughly.

Apply New Image System.

- **Remove and discard the release film** from the skin barrier.
- **Apply stoma paste or skin barrier ring** to sticky side of skin barrier next to stoma opening (optional).
- **Center opening of the skin barrier** over the stoma.
- **Apply barrier** and gently press until it is touching the skin at all points (Figure 1).
- **Attach pouch** to skin barrier by engaging the lower edges of the pouch flange and skin barrier flange (Figure 2).
- **Press the two flanges together.** A series of “clicks” will confirm you are doing it correctly (Figure 3).
- **Gently tug** downward on the pouch to confirm it is securely attached.

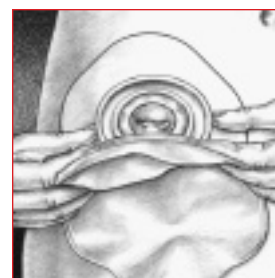


Figure 2

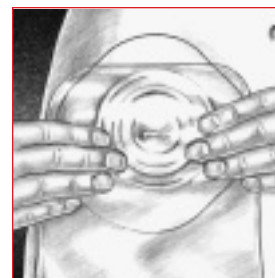


Figure 3

Remove New Image System.

- Gently **peel the skin barrier away** from the skin, beginning at the top and working downward.
- Properly **dispose** of used pouch and barrier. Do not flush down the toilet.

Guidelines

- Empty pouch when 1/3 full of discharge or gas. Do not allow the pouch to overfill.
- If leakage occurs, do not reinforce with tape. Change the pouch and skin barrier.
- Change barrier and pouch every _____ days.
- If using a Flexend Skin Barrier, the use of a skin gel wipe is not recommended.
- For more information, refer to the New Image instructions in the skin barrier box.
- If you have any questions regarding your care, contact your Wound, Ostomy, Continence Nurse (WOC or ET Nurse) or health care professional at: _____.

List of products

Products	Stock Number	Size
New Image Skin Barrier	_____	_____
New Image Pouch	_____	_____
Other products	_____	_____
	_____	_____
	_____	_____

Where to purchase products

Special instructions from your WOC/ET Nurse or health care professional



Hollister Incorporated
 2000 Hollister Drive
 Libertyville, IL 60048 USA
 1.800.323.4060

Distributed in Canada by
Hollister Limited
 95 Mary Street
 Aurora, Canada L4G 1G3
 1.800.263.7400

www.ostomyworld.com