

A collage of various medical supplies including dressings, bandages, a boot, and a cast. The items are arranged in a scattered, overlapping manner. The text 'Wound Care' is overlaid in the center-right area.

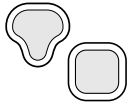
Wound Care

Table of Contents - Wound Care

| | | | |
|--|----------------------|-------------------------------------|-----------------|
| Moist Wound Dressings | pages 104-105 | Limb Restraints | page 112 |
| Restore Plus Hydrocolloid Dressings | 104 | Quick Release Limb Holder | 112 |
| Restore CalciCare Calcium Alginate | 105 | Quilted Limb Holder | 112 |
| Restore Hydrogels | 105 | “ER” Restraint | 112 |
| Restore Wound Cleanser | page 105 | Arm Holder System | 112 |
| Skin Care | page 106 | Body Restraints | page 113 |
| Skin Cleanser | 106 | Poncho..... | 113 |
| Skin Gel..... | 106 | Sleeved Blazer Jacket | 113 |
| Restore Cleanser and Moisturizer..... | 106 | ICU Blazer..... | 113 |
| Petrolatum-Based Barrier Ointment..... | 106 | Quilted Torso Restraint | 113 |
| Restore DimethiCreme | 106 | Restraint Alternatives | page 114 |
| Skin Conditioning Cremes..... | 106 | “Grait” Gait Belt | 114 |
| Odor Management | page 107 | Johnny Grait Belt | 114 |
| Odor-Absorbent Dressings: Sterile | 107 | IV Sleeve | 114 |
| Odor Eliminator Spray | 107 | Chair Belt | 114 |
| Wound Drainage Collectors | pages 108 | Educational Resources | page 115 |
| Wound Drainage Collectors | 108 | Protocols | 115 |
| Universal Catheter Access Port: Sterile..... | 108 | Algorithms | 115 |
| Tube Management Products | pages 108-109 | Other Educational Resources | 115 |
| Oral Endotracheal Tube Attachment Device (ETAD)..... | 108 | Glossary | 116-118 |
| Horizontal Tube Attachment Device: Sterile (HTAD)..... | 109 | Stock Number Index | 119 |
| Vertical Tube Attachment Device: Sterile (VTAD)..... | 109 | | |
| Drain Tube Attachment Device (DTAD)..... | 109 | | |
| Feeding Tube Attachment Device (FTAD) | 109 | | |
| Suction Tube Attachment Device (STAD)..... | 109 | | |
| Pressure Management | pages 110-111 | | |
| Orthotic Boot | 110 | | |
| Accessories - Transfer Soles..... | 110 | | |
| Replacement Liners | 110 | | |
| Heel and Elbow Protectors..... | 111 | | |
| “Premium” Heel and Elbow Protectors | 111 | | |
| Lifter Foot Elevator | 111 | | |
| Decubitus Foam Protector | 111 | | |
| Cannula Tubing Pads..... | 111 | | |

Moist Wound Dressings

Restore Plus Hydrocolloid Dressing: Sterile



995x/996x

- ▶ Conformable occlusive dressing with flexible outer layer
- ▶ Maintains moist wound environment
- ▶ Manages minimal to moderate exudate in partial- and full-thickness wounds
- ▶ Available with or without tapered edges, specialty shapes
- ▶ Includes disposable wound measuring guide

| Stock No | HCPCS | Description | Quantity/Box |
|----------|-------|---|--------------|
| 9953 | A6234 | Without tapered edges 4" x 4" | 5 |
| 9954 | A6235 | Without tapered edges 6" x 8" | 3 |
| 9955 | A6236 | Without tapered edges 8" x 8" | 3 |
| 9956 | A6234 | With tapered edges 4" x 4" | 5 |
| 9963 | A6235 | With tapered edges 6" x 6" | 5 |
| 9957 | A6235 | With tapered edges 6" x 8" | 3 |
| 9958 | A6236 | With tapered edges 8" x 8" | 3 |
| 9959 | A6235 | With tapered edges/triangle shaped 17 sq. in. | 5 |
| 9965 | A6235 | With tapered edges/triangle shaped 26.5 sq. in. | 5 |

Restore Extra Thin Hydrocolloid Dressing: Sterile



9921/9923/9925

- ▶ Thinner occlusive dressing with flexible backing
- ▶ Maintains moist wound environment
- ▶ Manages minimal exudate in shallow wounds
- ▶ Protects skin from friction injury
- ▶ Includes disposable wound measuring guide

| Stock No | HCPCS | Description | Quantity/Box |
|----------|-------|-------------|--------------|
| 9921 | A6234 | 4" x 4" | 5 |
| 9923 | A6235 | 6" x 8" | 3 |
| 9925 | A6236 | 8" x 8" | 3 |

Restore Cx Hydrocolloid Dressing: Sterile



9931/9933/9936

- ▶ Occlusive dressing
- ▶ Manages minimal to moderate exudate in partial-thickness wounds
- ▶ Easily molded into difficult-to-manage locations
- ▶ Includes disposable wound measuring guide

| Stock No | HCPCS | Description | Quantity/Box |
|----------|-------|-------------|--------------|
| 9931 | A6234 | 4" x 4" | 5 |
| 9933 | A6235 | 6" x 8" | 3 |
| 9936 | A6236 | 8" x 8" | 3 |

Restore Hydrocolloid Dressing: Sterile



9930/9932/9935

- ▶ Occlusive dressing with foam backing
- ▶ Ideal for low friction areas with moderate exudate
- ▶ Includes disposable wound measuring guide

| Stock No | HCPCS | Description | Quantity/Box |
|----------|-------|-------------|--------------|
| 9930 | A6234 | 4" x 4" | 5 |
| 9932 | A6235 | 6" x 8" | 3 |
| 9935 | A6236 | 8" x 8" | 3 |

Restore Hydrocolloid Dressing for Psoriasis



9927/9928

- ▶ Thin hydrocolloid
- ▶ Manages plaque-type psoriasis
- ▶ Flexible film backing
- ▶ Provides occlusive environment while allowing transmission of moisture vapor

| Stock No | HCPCS | Description | Quantity/Box |
|----------|-------|-------------|--------------|
| 9927 | A6234 | 4" x 4" | 5 |
| 9928 | A6236 | 8" x 8" | 3 |

Restore CalciCare Calcium Alginate Dressing: Sterile



9938/9937/9939/9940

- ▶ Highly absorptive
- ▶ Made from calcium sodium alginate, creating conformable protective gel when in contact with exudate
- ▶ Forms moist wound interface
- ▶ Remains intact when saturated so it is removed in one piece

| Stock No | HCPCS | Description | Quantity/Box |
|----------|-------|-------------|--------------|
| 9938 | A6196 | 2" x 2" | 10 |
| 9937 | A6196 | 4" x 4" | 10 |
| 9939 | A6197 | 4" x 8" | 5 |
| 9940 | A6199 | 12" rope | 5 |

Restore Hydrogel Dressing

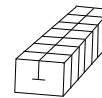


9974/9972/9973

- ▶ Maintains moist healing environment in partial- and full-thickness wounds
- ▶ Clear, viscous gel
- ▶ Up to 72-hour wear time
- ▶ Available in three forms

| Stock No | Description | Quantity/Box |
|----------|--|--------------|
| 9974 | Amorphous in tube 3 oz. | 12 |
| 9972 | Impregnated gauze sponge 4" x 4" - sterile | 15 |
| 9973 | Impregnated gauze strip 2" x 3.5 yd. - sterile | 12 |

PinCare Pin Site Dressings: Sterile



30000

- ▶ Stays in place and minimizes motion at the pin site
- ▶ Absorbs exudate, wicking away drainage
- ▶ Reduces potential for pin site infection
- ▶ Compatible with all types of fixators
- ▶ One-size-fits-all — both adult and pediatric populations

| Stock No | Description | Quantity/Box |
|----------|-------------------|--------------|
| 30000 | Pin site dressing | 12 |

Wound Cleanser

Restore Wound Cleanser



9975/9976

- ▶ Helps remove particulate matter and other debris from wound bed
- ▶ No-rinse alternative to saline and harsh antiseptic cleansers

| Stock No | Description | Quantity/Box |
|----------|-------------------|--------------|
| 9975 | 8 oz. pump spray | 12 |
| 9976 | 12 oz. pump spray | 12 |

Skin Care

Hollister Skin Cleanser



7210

- ▶ For use on intact skin
- ▶ Cleanses peristomal and perianal skin of urinary and fecal discharge
- ▶ Cleanses skin surrounding wounds and fistulas
- ▶ Gentle, non-irritating
- ▶ Must be rinsed

| Stock No | Description | Quantity/Box |
|----------|--------------------------|--------------|
| 7210 | 8 oz. (240ml) pump spray | 12 |

Hollister Skin Gel



7917

- ▶ Helps protect vulnerable areas from effects of mechanical injury
- ▶ Use under tape to minimize skin stripping

| Stock No | HCPCS | Description | Quantity/Box |
|----------|-------|---------------------------|-------------------------------------|
| 7917 | A5119 | Protective dressing wipes | 12 cartons (50 wipes per carton) |

Restore Cleanser & Moisturizer



9977/9978

- ▶ Effective skin protection for people with urinary and/or fecal incontinence
- ▶ Cleanser, moisturizer, protective breathable barrier for skin or mucous membrane surfaces exposed to harmful stimuli
- ▶ Can be used as moisturizer and total body cleanser
- ▶ Dimethicone-based
- ▶ No rinse

| Stock No | Description | Quantity/Box |
|----------|-----------------------------|--------------|
| 9977 | 7.5 oz. (222ml) pump spray | 12 |
| 9978 | 11.5 oz. (340ml) pump spray | 12 |

Hollister Moisture Barrier Skin Ointment



7230

- ▶ Helps protect and soothe irritated skin
- ▶ For pediatric and geriatric use
- ▶ Contains vitamins A, D, and E
- ▶ Hypoallergenic
- ▶ Petrolatum-based

| Stock No | HCPCS | Description | Quantity/Box |
|----------|-------|---------------------|--------------|
| 7230 | A6250 | 2.5 oz. (75ml) tube | 12 |

Restore DimethiCreme



9979

- ▶ Dimethicone-based protective breathable barrier
- ▶ Use on skin or mucous membrane surfaces exposed to harmful stimuli
- ▶ Moisturizes and protects

| Stock No | Description | Quantity/Box |
|----------|--------------------|--------------|
| 9979 | 4 oz. (118ml) tube | 12 |

Hollister Skin Conditioning Creme



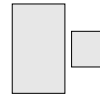
7220

- ▶ Moisturizes and soothes dry, flaky skin
- ▶ May be used under adhesive products

| Stock No | HCPCS | Description | Quantity/Box |
|----------|-------|----------------------|--------------|
| 7220 | A6250 | 4 oz. (120ml) bottle | 12 |

Odor Management

Hollister Odor-Absorbent Dressing: Sterile



9904/9906

- ▶ Foam matrix dressing covered with non-woven fabric for patients with malodorous wounds resulting from necrosis, infection, or bacterial contamination
- ▶ Impregnated with carbon fibers to neutralize wound odor
- ▶ Use as primary or secondary dressing
- ▶ Eliminates odor continuously for up to 40 hrs.
- ▶ Can be cut to fit

| Stock No | Description | Quantity/Box |
|----------|-------------|--------------|
| 9904 | 4" x 4" | 10 |
| 9906 | 6" x 10" | 10 |

m9 Odor Eliminator Spray



7732 / 7733 / 7734 / 7735

- ▶ Destroys odors at the source
- ▶ Pump spray
- ▶ Available unscented or with light apple scent

| Stock No (Unscented) | Description | Quantity/Box |
|----------------------|---------------|--------------|
| 7732 | 2 oz. (60mL) | 12 |
| 7733 | 8 oz. (240mL) | 6 |

| Stock No (Scented) | Description | Quantity/Box |
|--------------------|---------------|--------------|
| 7734 | 2 oz. (60mL) | 12 |
| 7735 | 8 oz. (240mL) | 6 |

Wound Drainage Collectors

Hollister Wound Drainage Collectors



970x/977x

- ▶ For management of draining wounds, fistulae, or draining tube sites
- ▶ Available with and without synthetic skin barriers
- ▶ Sterile and non-sterile
- ▶ Made with odor-barrier film, convenience drain
- ▶ Reclosable cap allows access to wound site without removing pouch

| With Barrier: Non-Sterile Stock No | HCPCS | Description | Quantity/ Box |
|---------------------------------------|-------|----------------------------------|------------------|
| 9773 | A6154 | Small (for wounds up to 3") | 10 |
| 9776 | A6154 | Medium (for wounds up to 3-3/4") | 10 |
| 9778 | A6154 | Large (for wounds up to 4" x 8") | 3 |

| With Barrier: Sterile Stock No | HCPCS | Description | Quantity/ Box |
|-----------------------------------|-------|----------------------------------|------------------|
| 9701 | A6154 | Small (for wounds up to 3") | 5 |
| 9702 | A6154 | Medium (for wounds up to 3-3/4") | 5 |
| 9703 | A6154 | Large (for wounds up to 4" x 8") | 3 |

| Without Barrier: Sterile Stock No | HCPCS | Description | Quantity/ Box |
|--------------------------------------|-------|----------------------------------|------------------|
| 9772 | A6154 | Small (for wounds up to 3") | 10 |
| 9775 | A6154 | Medium (for wounds up to 3-3/4") | 10 |
| 9777 | A6154 | Large (for wounds up to 4" x 8") | 3 |

Hollister Universal Catheter Access Port: Sterile



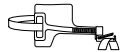
9779

- ▶ Graduated nipple and punch allows introduction of catheter or drain through wound drainage collector

| Stock No | Quantity/Box |
|----------|--------------|
| 9779 | 10 |

Tube Management Products

Oral Endotracheal Tube Attachment Device (ETAD)



9789/9788

- ▶ Secures orally placed endotracheal tubes (5-10mm or 15-30 Fr)
- ▶ Adhesive synthetic skin barrier protects skin and provides up to 5 days of wear time
- ▶ Unique clamping mechanism enables proximal and lateral tube repositioning
- ▶ Simplifies access for suctioning and oral care
- ▶ Adjustable neck band holds device securely to head

| Stock No | Description | Quantity/Box |
|----------|---|--------------|
| 9789 | Oral Endotracheal Tube Attachment Device (ETAD) | 4 |
| 9788 | ETAD replacement neck band straps | 4 |

Horizontal Tube Attachment Device (HTAD): Sterile



9781

- ▶ Secures drains, tubes, or catheters (5-40 Fr) parallel to patient's skin
- ▶ Tubes can be secured at exit site, or at a point distal to exit site
- ▶ FlexWear adhesive barrier secures device to skin
- ▶ Prevents tube migration and protects skin surrounding the exit site

| Stock No | Description | Quantity/Box |
|----------|---|--------------|
| 9781 | Horizontal Tube Attachment Device (HTAD): Sterile | 5 |

Vertical Tube Attachment Device (VTAD): Sterile



9782

- ▶ Secures drains, tubes, or catheters (5-40 Fr) vertical to patient's skin
- ▶ Tubes are secured at exit site, eliminating need for additional tape or sutures
- ▶ FlexWear barrier protects skin and allows visualization of the insertion site

| Stock No | Description | Quantity/Box |
|----------|---|--------------|
| 9782 | Vertical Tube Attachment Device (VTAD): Sterile | 5 |

Drain Tube Attachment Device (DTAD): Sterile



9780

- ▶ Secures a variety of drains or tubes (10-24 Fr) vertical to patient's skin
- ▶ Foam-backed FlexWear barrier conforms to a variety of sites

| Stock No | Description | Quantity/Box |
|----------|--|--------------|
| 9780 | Drain Tube Attachment Device (DTAD): Sterile | 5 |

Feeding Tube Attachment Device (FTAD)



9786

- ▶ Secures nasogastric/nasointestinal feeding or suction tubes (5-18 Fr)
- ▶ Butterfly-shaped FlexWear barrier conforms to patient's nose
- ▶ More comfortable than tape
- ▶ Unique swivel clamp eliminates pressure on the nares

| Stock No | Description | Quantity/Box |
|----------|---------------------------------------|--------------|
| 9786 | Feeding Tube Attachment Device (FTAD) | 20 |

Suction Tube Attachment Device (STAD)

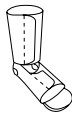


9785

- ▶ Secures nasogastric suction tubes (12-18 Fr)
- ▶ Butterfly-shaped FlexWear skin barrier conforms to patient's nose
- ▶ More comfortable than tape
- ▶ Unique swivel clamp eliminates pressure on the nares

| Stock No | Description | Quantity/Box |
|----------|---------------------------------------|--------------|
| 9785 | Suction Tube Attachment Device (STAD) | 20 |

HeelBoot Orthotic Boot



1200x

- ▶ Comfortable and lightweight
- ▶ Treats mild to moderate plantar flexion contracture, eliminates pressure from heel
- ▶ Rotation bar and toe pad can be repositioned to prevent hip rotation
- ▶ Fabric-covered toe pads for protection
- ▶ Soft, washable fleece liner
- ▶ Reusable laundry bag
- ▶ Transfer sole can be attached for transfer from bed to chair

HeelBoot Orthotic Boot

| Stock No | HCPCS | Description | Quantity/Box |
|----------|-------|--|--------------|
| 12000 | L4396 | Regular (less than 16" mid-calf circumference) | 12 |
| 12001 | L4396 | Large (16" or more mid-calf circumference) | 12 |

Accessories

| Stock No | Description | Quantity/Box |
|----------|--------------------------|--------------|
| 12002 | Transfer sole (one size) | 6 |

Replacement Liners

| Stock No | HCPCS | Description | Quantity/Box |
|----------|-------|-------------|--------------|
| 12004 | L4392 | Regular | 12 |
| 12005 | L4392 | Large | 12 |

Heelbo Heel and Elbow Protectors



1203x/1204x

- ▶ Avoids shear and friction injury
- ▶ Flexible stretch weave allows skin to breathe, gives comfortable fit, slips on easily
- ▶ Floating contoured foam pad eliminates rolling and binding
- ▶ Use on heels, elbows, and knees
- ▶ Washable
- ▶ Protectors retain shape after repeated use
- ▶ Available in 5 color-coded sizes

| Stock No | HCPCS | Description | Quantity/Box |
|----------|-------|---|--------------|
| 12037 | E0191 | Small – Yellow (fits limbs up to 16" in circumference) | 12 pair |
| 12038 | E0191 | Medium – Blue (fits limbs up to 17" in circumference) | 12 pair |
| 12039 | E0191 | Large – White (fits limbs up to 19" in circumference) | 12 pair |
| 12040 | E0191 | Extra Large – Green (fits limbs up to 23" in circumference) | 12 pair |
| 12041 | E0191 | Extra Extra Large – Beige (fits limbs up to 25" in circumference) | 12 pair |

Heelbo "Premium" Heel and Elbow Protectors

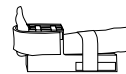


1205x/1206x

- ▶ Unique viscoelastic polymer pad reduces pressure by up to 38%
- ▶ Helps reduce pressure, shear, and friction, promoting skin integrity
- ▶ Washable
- ▶ Available in 5 color-coded sizes

| Quantity/Stock No | HCPCS | Description | Box |
|-------------------|-------|---|---------|
| 12059 | E0191 | Small – Yellow (fits limbs up to 16" in circumference) | 12 pair |
| 12060 | E0191 | Medium – Blue (fits limbs up to 17" in circumference) | 12 pair |
| 12061 | E0191 | Large – White (fits limbs up to 19" in circumference) | 12 pair |
| 12062 | E0191 | Extra Large – Green (fits limbs up to 23" in circumference) | 12 pair |
| 12058 | E0191 | Replacement Polymer Pad | 12 pair |

Heelbo Lifter Foot Elevator



1205x

- ▶ Adjustable strap secures foot and helps prevent foot drop
- ▶ Polyurethane foam is comfortable and will not bottom out
- ▶ Octagon shape keeps foot in upright position
- ▶ Attached fasteners will not fall off
- ▶ Available with extended support for calf or base to prevent rotation

| Stock No | Description | Quantity/Box |
|----------|--------------------------------------|--------------|
| 12054 | Lifter Foot Elevator – Octagon Shape | 4 |
| 12055 | Lifter with Extended Calf Base | 4 |
| 12056 | Lifter with Base to Prevent Rotation | 4 |

CubiPad: Decubitus Foam Protector



1202x/1203x

- ▶ Holds tight, peels off easily
- ▶ Non-irritating adhesive on one side
- ▶ Ideal for OR, ICU, CCU, nursing home, general medical use
- ▶ Available in rectangular pads and donut shape
- ▶ 1" or 7/16" thickness

| Stock No | Description | Quantity/Box |
|----------|---|--------------|
| 12028 | Cubi 5 for ears, heels (2/pack) | 10 packs |
| 12029 | Cubi 7 for scapula (2/pack) | 10 packs |
| 12030 | Cubi 10 for trochanter, sacrum (2/pack) | 10 packs |
| 12031 | Rectangle – 1" thickness (5/pack) | 5 packs |
| 12032 | Rectangle – 7/16" thickness (10/pack) | 5 packs |

Cann-U-Wrap: Cannula Tubing Pads



12033

- ▶ Unique super-soft foam
- ▶ Easy to wipe clean, provides continuous "air-cooled" comfort
- ▶ Helps reduce chafing and sores
- ▶ Thin, 5-3/4" strips can be trimmed to fit any size contact area, adhere firmly to tubing

| Stock No | Description | Quantity/Box |
|----------|---------------------|--------------|
| 12033 | Cannula Tubing Pads | 100 pair |

Limb Restraints

Heelbo INCH Quick Release Limb Holder



1204x

- ▶ Soft, quilted material is cool and comfortable
- ▶ Unique wrist adjustment provides perfect fit without cinching or tourniquet effect
- ▶ Knotless clasps simple to use, allow fast and easy access to patient
- ▶ Hook and loop fasteners and quick release loop accessory on Preset Inch eliminates untying or cutting off knots
- ▶ Available in 2 convenient sizes for perfect fit
- ▶ Large enough to accommodate armboards
- ▶ Meets OBRA objectives
- ▶ Machine washable

| Regular Stock No | Description | Quantity/Box |
|------------------|-------------|--------------|
| 12042 | Small | 6 pairs |
| 12044 | Large | 6 pairs |

Preset Inch - with preset loop

| Stock No | Description | Quantity/Box |
|----------|-------------|--------------|
| 12046 | Small | 6 pairs |
| 12047 | Large | 6 pairs |

Limbo Quilted Limb Holder



1206x

- ▶ Quilted, seamless, and washable
- ▶ Quick release in emergencies - special D-ring and clasp lets go in 5 seconds or less
- ▶ Durable fabric has "bellows" action, providing air-cooled comfort that bounces back after washing, thrashing, and tugging
- ▶ Available in large enough size to fit around an armboard

| Stock No | Description | Quantity/Box |
|----------|--|--------------|
| 12068 | Small - Regular with D-Rings and Clasp | 6 pairs |
| 12069 | Large - Extra Large with D-Rings and Clasp | 6 pairs |

Heelbo "ER" Restraint



1207x

- ▶ Combination of neoprene and nylon provides comfort for patient and allows for strong, durable restraint
- ▶ Quick release buckle provides easy access
- ▶ Two straps secure easily to bed frame through double D-rings

| Stock No | Description | Quantity/Box |
|----------|---|--------------|
| 12073 | ER Wrist Restraint - Blue | 6 pairs |
| 12076 | ER Ankle Restraint with Connector - Red | 6 pairs |

Heelbo L-Bow Arm Holder System



1207x/1208x

- ▶ Keeps patient's hands away from face and IV tubing
- ▶ No rivets to abrade skin
- ▶ Soft, comfortable material can be applied directly to skin
- ▶ Hook and loop fasteners easy to use yet secure

| Pediatric Stock No | Description | Quantity/Box |
|--------------------|------------------|--------------|
| 12077 | Small - 7" x 5" | 6 pairs |
| 12079 | Large - 10" x 8" | 6 pairs |

| Adult Stock No | Description | Quantity/Box |
|----------------|--------------------|--------------|
| 12080 | Medium - 11" x 10" | 6 pairs |
| 12081 | Large - 13" x 12" | 6 pairs |

Body Restraints

Easy-On Poncho



1208x

- ▶ Guards against slumping or sliding forward for patients in bed or wheelchair
- ▶ Wider webbing and long straps prevent knotting
- ▶ Available with handy pocket

| Stock No | Description | Quantity/Box |
|----------|-------------------------------|--------------|
| 12086 | Easy-On Poncho - Yellow Small | 6 |
| 12087 | Easy-On Poncho - Blue Medium | 6 |
| 12088 | Easy-On Poncho - Green Large | 6 |

Heelbo Sleeved Blazer Jacket



1210x

- ▶ State-of-the-art system provides maximum security and comfort in eye-pleasing colors that are coded for easy size identification
- ▶ Long straps for easy-to-adjust safety in wheelchair or bed
- ▶ Soft fabric and adjustable side ties ensure comfortable fit
- ▶ Durable, machine-washable materials for easy care

| Stock No | Description | Quantity/Box |
|----------|---|--------------|
| 12100 | Breezewear/Knotless - Yellow Small | 6 |
| 12101 | Breezewear/Knotless - Blue Medium | 6 |
| 12102 | Breezewear/Knotless - Green Large | 6 |
| 12103 | Breezewear/Knotless - Beige Extra Large | 6 |
| 12035 | Replacement Loop Accessory | 6 |

Heelbo ICU Blazer



1210x/1214x

- ▶ Provides three-way access and optimum comfort
- ▶ Full-length back zipper and 2 shoulder zippers unzip quickly
- ▶ Jacket may be crisscrossed in back for rolling patient
- ▶ Capped sleeves help prevent patient from removing jacket
- ▶ Back zipper offset 1-3/4" from spinal column for comfort
- ▶ 2" webbed waist belt helps prevent abdominal abrasions
- ▶ Double fabric backing and hook and loop closures ensure zipper does not touch skin, even when unzipped

| Stock No | Description | Quantity/Box |
|----------|------------------------------|--------------|
| 12140 | Knotless - Yellow Small | 6 |
| 12141 | Knotless - Blue Medium | 6 |
| 12142 | Knotless - Green Large | 6 |
| 12143 | Knotless - Beige Extra Large | 6 |

Heelbo Quilted Torso Restraint



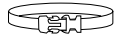
12072

- ▶ Constructed of soft, quilted material
- ▶ Features a lock jaw buckle
- ▶ Can be used for both the upper torso and lower extremities

| Stock No | Description | Quantity/Box |
|----------|------------------|--------------|
| 12072 | Knotless Release | 6 |

Restraint Alternatives

Heelbo "Grait" Gait Belt



12131

- ▶ Comfortable, easy-care, extra-strength webbing
- ▶ Lightweight, all-plastic buckle is easy on and off
- ▶ Ideal for ambulating patients

| Stock No | Description | Quantity/Box |
|----------|---------------|--------------|
| 12131 | Gait Belt 63" | 12 |

Heelbo Johnny Grait Belt



12134

- ▶ Removable multi-purpose safety belt
- ▶ Use anywhere - gurneys, chair commodes, beds, chairs, wheelchairs, and geri-chairs
- ▶ Cotton security belt has quick-release snap buckle closure, straps, and D-ring hook and loop fasteners
- ▶ Quickly attaches and detaches to almost any furniture or patient handling equipment
- ▶ No tying or untying knots

| Stock No | Description | Quantity/Box |
|----------|-------------------|--------------|
| 12134 | Johnny Grait Belt | 12 |

IV Sleeve

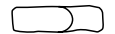


12026

- ▶ Designed to protect wound sites, IV sites and fragile skin
- ▶ Covers the hand and forearm, leaving the fingers and thumb free
- ▶ Made of a soft cotton and lycra blend fabric
- ▶ Machine washable at low temperature

| Stock No | Description | Quantity/Box |
|----------|-------------------|--------------|
| 12026 | IV Sleeve – Large | 25 |

Chair Belt



12129

- ▶ Features a hook and loop fastener in the front to allow the patient to self-release
- ▶ Helps position the upper torso in a geri-chair or wheelchair
- ▶ Machine washable

| Stock No | Description | Quantity/Box |
|----------|-------------------|--------------|
| 12129 | Heelbo Chair Belt | 6 |

Educational Resources

Protocols

Literature No.

| | |
|---|--------|
| Restore Plus and Restore Cx Hydrocolloid Dressings | 905123 |
| Restore Extra Thin Hydrocolloid Dressings | 905125 |
| Restore Hydrogel Dressing: Tube | 905121 |
| Restore Hydrogel Dressing: Impregnated Gauze Sponge and Packing Strips | 905122 |
| Restore CalciCare Calcium Alginate Dressings | 905124 |
| Restore DimethiCreme | 905662 |
| Restore Cleanser and Moisturizer | 905126 |
| HeelBoot Orthotic Boot | 906173 |
| ETAD | 906538 |

Algorithms

Literature No.

| | |
|--------------------------|--------|
| Pressure Ulcers | 905358 |
| Venous Ulcers | 905359 |
| Arterial Leg/Foot Ulcers | 905360 |
| Neuropathic Ulcers | 905362 |
| Skin At Risk | 905361 |

Other Educational Resources

Wound Measuring Guides

Educational Slides

Videos

Pressure Ulcer CEU Education - www.hollister.com

More Educational Information is Available at:

Minnie Schneider Resource Center

Hollister Incorporated

2000 Hollister Drive

Libertyville, Illinois 60048 USA

1.800.323.4060

Hollister Website

www.hollister.com

Glossary

The following is a list of common terms which are used in describing wounds and the periwound skin.

Abrasion: Wearing away of the skin through some mechanical process (friction or trauma).

Cellulitis: Inflammation of the tissues indicating a local infection; characterized by redness, edema and tenderness.

Colonized: Bacteria in an area (wound) that cause no local or systemic signs and symptoms; not an infection.

Debridement: Removal of foreign material and devitalized or contaminated tissue from a wound.

Dehiscence: Separation of wound edges.

Denude: Loss of epidermis.

Edema: Swelling. Presence of excess fluid in the interstitial space.

Epidermis: Outermost layer of the skin.

Erode: Loss of epidermis.

Erythema: Diffuse redness of the skin.

Eschar: Thick, leathery black crust; it is nonviable tissue and is colonized with bacteria.

Exudate: Accumulation of fluids in a wound.

Friction: Rubbing that causes mechanical trauma to the skin.

Full-thickness: Tissue destruction extending through the dermis to involve subcutaneous level and possibly muscle, fascia or bone.

Granulation: Formation of connective tissue and many new capillaries in a full-thickness wound; typically appears as red and cobblestoned.

Infection: Overgrowth of microorganisms in sufficient quantities to overwhelm the body's defenses.

Lesion: Broad term referring to wounds, sores.

Maceration: Softening of tissue by soaking in fluids; looks like "dish-pan hands."

Necrotic: Dead; avascular

Partial-thickness: Wounds that extend through the epidermis and may involve the dermis; these wounds heal by re-epithelialization.

Periwound: The area immediately around the wound.

Pus: Thick fluid composed of leukocytes, bacteria, and cellular debris.

Shear: Sliding of skin over subcutaneous tissues and bones causing a kink in cutaneous capillaries which may lead to ischemia.

Stage 1 Pressure Ulcer: An observable pressure-related alteration of intact skin whose indicators, as compared to an adjacent or opposite area on the body, may include changes in one or more of the following: skin temperature (warmth or coolness), tissue consistency (firm or boggy feel), and/or sensation (pain, itching).

The ulcer appears as a defined area of persistent redness in lightly pigmented skin, whereas in darker skin tones, the ulcer may appear with persistent red, blue, or purple hues.

Stage 2 Pressure Ulcer: Partial thickness skin loss involving epidermis, dermis, or both. The ulcer is superficial and presents clinically as an abrasion, blister or shallow crater.

Stage 3 Pressure Ulcer: Full thickness skin loss involving damage to, or necrosis of, subcutaneous tissue that may extend down to, but not through, underlying fascia. The ulcer presents clinically as a deep crater with or without undermining of adjacent tissue.

Stage 4 Pressure Ulcer: Full thickness skin loss with extensive destruction, tissue necrosis, or damage to muscle, bone, or supporting structures (e.g., tendon, joint, capsule). Undermining and sinus tracts also may be associated with Stage 4 pressure ulcers.

Sinus Tract: A course or pathway which can extend in any direction from the wound base; results in dead space with potential for abscess formation.

Slough: Stringy, necrotic tissue; usually yellow.

Strip: Removal of epidermis by mechanical means, usually tape.

Ulcer: Loss of epidermis/dermis or mucous membrane with definite margins.

Undermine: Skin edges of a wound that have lost supporting tissue under intact skin.

Unstageable Pressure Ulcer: Covered with eschar or slough which prohibits complete assessment of the wound.

Wound: A break in the integrity of the skin; an injury to the body which causes a disruption of the normal continuity of the body structures.

Wound Margin: Rim or border of a wound.

Skin Structure:

The **epidermis**, which is the outermost layer of the skin, is characterized as follows: avascular, varies in thickness (depending on body location), a dry structure which sheds cells and replaces itself every 4 to 6 weeks; approximately the thickness of a piece of plastic wrap.

The **dermis** is located directly beneath the epidermis and is characterized as follows: provides strength and structural support through a vascular network of connective tissue blood vessels, nerves, hair and nails. Sebaceous glands and sweat glands originate from this layer which is thicker than the epidermis.

Below the dermis is the **subcutaneous tissue** which is composed of major vessels, lymphatics, fat and connective tissue. This area provides insulation and nutritional support for the skin. Located below the subcutaneous tissue are fascia, muscles, tendons and bone. The thickness of the dermis and subcutaneous layers vary from person to person and on different parts of the body.

Types of Ulcers:

Pressure Ulcers: Any lesion of the skin caused by unrelieved pressure resulting in damage to underlying tissue. Pressure ulcers usually occur over bony prominences such as the heel, coccyx or trochanter which are in contact with a surface, such as a bed, wheelchair, shoe or cast. When pressure is not relieved, tissue ischemia develops and a pressure ulcer results. Most pressure ulcers are preventable. Therefore, early risk assessment, skin care, attention to patient support surfaces and education are essential.

Venous Ulcers: These are the most common type of lower-leg ulcers in ambulatory people. The underlying cause involves vein damage or an incompetent calf muscle pump action which leads to venous hypertension. As a result, the blood pools in the lower extremities causing edema and leakage of fibrinogen and other blood products into the tissues. Trauma to the area or increased pressure within the tissues results in ulceration.

Arterial Ulcers: Arterial ulcers result from chronic or acute arterial insufficiency to the skin and subcutaneous tissue of the lower extremities. The most common cause is a progressive disease: atherosclerosis. The precipitating event leading to ulceration is usually trauma, such as a bumped toe or tight shoes. Arterial ulcers may occur alone or in combination with diabetes, venous stasis and numerous other conditions. Multidisciplinary management of these patients with early intervention and close monitoring is key to prevention of more serious complications.

Neuropathic Ulcers: Neuropathic ulcers may occur in individuals with diabetes, spinal cord injury, Hansen's Disease, or other conditions that result in loss of sensation in the legs and feet. Diabetic foot ulcers are most commonly caused by peripheral neuropathy and peripheral vascular disease. Multidisciplinary management of these patients with early intervention and close monitoring is key to prevention of more serious complications.

| Stock No | Page | Stock No | Page |
|----------|----------|----------|------|
| 1200x | 110 | 9785 | 109 |
| 1202x | 111 | 9786 | 109 |
| 12026 | 114 | 9788 | 108 |
| 1203x | 110, 111 | 9789 | 108 |
| 12033 | 111 | 9904 | 107 |
| 12035 | 113 | 9906 | 107 |
| 1204x | 110, 112 | 9921 | 104 |
| 1205x | 111 | 9923 | 104 |
| 1206x | 111, 112 | 9925 | 104 |
| 1207x | 112 | 9927 | 105 |
| 12072 | 113 | 9928 | 105 |
| 1208x | 112, 113 | 9930 | 104 |
| 1210x | 113 | 9931 | 104 |
| 12129 | 114 | 9932 | 104 |
| 12131 | 114 | 9933 | 104 |
| 12134 | 114 | 9935 | 104 |
| 1214x | 113 | 9936 | 104 |
| 30000 | 105 | 9937 | 105 |
| 7210 | 106 | 9938 | 105 |
| 7220 | 106 | 9939 | 105 |
| 7230 | 106 | 9940 | 105 |
| 7732 | 107 | 995x | 104 |
| 7733 | 107 | 996x | 104 |
| 7734 | 107 | 9972 | 105 |
| 7735 | 107 | 9973 | 105 |
| 7917 | 106 | 9974 | 105 |
| 970x | 108 | 9975 | 105 |
| 977x | 108 | 9976 | 105 |
| 9779 | 108 | 9977 | 106 |
| 9780 | 109 | 9978 | 106 |
| 9781 | 109 | 9979 | 106 |
| 9782 | 109 | | |