

Extended Wear™ Latex Male External Catheter

General Information

The male external catheter, self-adhering and engineered with natural rubber latex* material, is available in standard length with 4 size ranges – each with a unique inner flap and application collar. External catheters provide men with a good alternative to indwelling catheters, diapers, or other absorbent products.

Four sizes are available, and the packaging is color-coded for easy identification.

Small	(22 mm - 25 mm)	Green
Medium	(26 mm – 30 mm)	Purple
Intermediate	(31 mm – 35 mm)	Tan
Large	(36 mm – 39 mm)	Blue

Selecting the Proper Size and Preparation

- Use the color-coded Hollister sizing guide to determine correct size needed.¹
- Place the color-coded Hollister sizing guide beneath the widest diameter of the penis shaft (not the glans).
- Trim pubic hair if necessary.
- Wash penis with mild soap and warm water. Dry thoroughly.

Instructions for Use

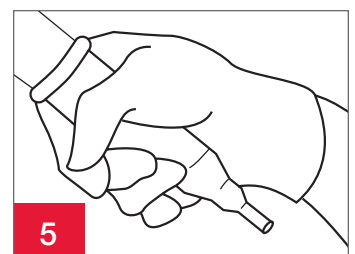
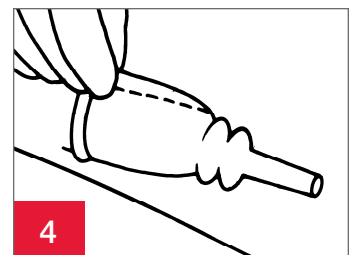
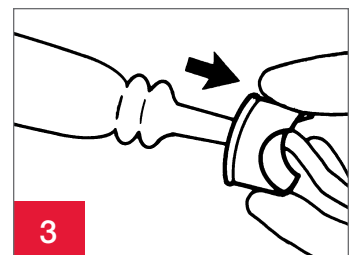
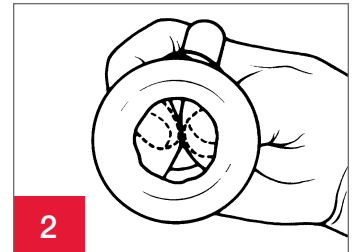
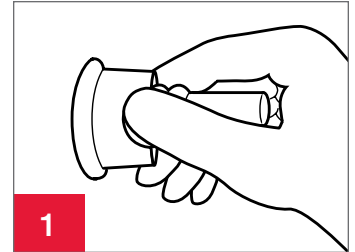
1. Open package at perforation. The sheath (catheter) is supplied with a plastic collar, which presents the inner flap in a position for application.
Pinch sheath (catheter) closed with the thumb and forefinger in the finger-cuts.
2. Place on penis, so the tip of the glans is against the inside of the sheath (catheter), which is pinched with thumb and forefinger. The glans should protrude into the opening of inner flap, which should fit snugly on the glans to prevent backflow of urine. Do not position inner flap too far forward. Do not position the entire glans through the inner flap. If applying to an uncircumcised penis, allow the foreskin to remain in its natural position. Take care not to pinch or retract the foreskin.
3. Slowly unroll onto the penis with as little wrinkling as possible until product is fully extended. Do not force the plastic collar onto the penis. Remove and discard the plastic collar after sheath (catheter) is in place.
4. Seal excess material to itself by pinching it together, thus closing any leakage channels and providing a secure seal.
5. Gently squeeze to properly seal adhesive to the skin. Do not attempt to reposition the product.
To connect this product to a drainage system, refer to the instructions for use packed with that product.

To remove and dispose

6. Disconnect from the drainage system. Gently roll the sheath (catheter) forward and off the penis. If necessary, apply a warm wet compress (such as a wet washcloth) around the sheath (catheter) to help loosen the adhesive. Please follow all local disposal regulations. around the sheath (catheter) to help loosen the adhesive. Please follow all local disposal regulations.

*precaution: this product contains natural rubber latex which may cause an allergic reaction

¹ Sizing guides can be ordered free of charge using #908921



Extended Wear™ Latex Male External Catheter



FREQUENTLY ASKED QUESTIONS	
How long do these catheters stay on?	A variety of factors such as application technique, individual anatomy and condition of the skin may influence wear time. With proper application, you can expect up to 24 hours of wear time.
Is sizing important in selecting the right external catheter?	Yes. The Hollister sizing guide is available to help in proper catheter size selection. If the patient is between sizes, select the larger of the two sizes, apply the catheter, and crimp the excess latex material on the shaft so the urine does not channel beneath the catheter and leak.
How should I clean the bedside collector or leg bag used with an external catheter?	Between uses, empty and rinse bags with lukewarm water or clean per manufacturer instructions and/or healthcare provider recommendations. Hang to dry away from heat. Wipe outside of bag and tubing with damp cloth as needed. Clean the connector with an alcoholic wipe before each use. Discard when visibly damaged or stained.
What is the best way to remove the external catheter?	Gently roll the sheath (catheter) forward and off the penis. Use of a warm, wet washcloth, held over the catheter for approximately 30 seconds may help weaken the adhesive for easier removal in some cases. Adhesive remover wipes may also be helpful.
Can external catheters be used on an uncircumcised penis?	Yes. Apply the catheter with the foreskin in its natural position.

Indications and Intended Use

The product is an accessory intended to channel urine from the penis to extension tubing and urinary collection bags for adult males with urinary incontinence.

WARNINGS

Reuse of a single use product may create potential risk to the user such as poor adhesion, leakage, and skin irritation.

Precautions

This product contains natural rubber latex which may cause allergic reactions.

Do not use on irritated or compromised skin.

Do not use if allergic reaction occurs.

Ensure proper fit as instructed. If sheath (catheter) size is incorrect or leakage occurs, skin damage may occur (e.g., irritation, broken skin, rash, or redness). This may decrease wear time.

Follow directions to remove if experiencing swelling, numbness, discomfort, pain, discoloration, or abnormal appearance.

Notes

For good hygiene, change sheath (catheter) daily.

To help ensure proper adhesion, apply to clean, dry intact skin. Do not use lotions, powders, or ointments on the skin as these products may interfere with adhesion of the product. Contact a healthcare practitioner for help with the product or with skin irritation.

Hollister, the Hollister logo and Extended Wear are trademarks of Hollister Incorporated.
 © 2021 Hollister Incorporated.
 921799-0121 US-01325

Hollister Incorporated
 2000 Hollister Drive
 Libertyville, Illinois 60048
 1.800.323.4060

www.hollister.com